

Xerox® ConnectKey® 1.5  
Technology



# Xerox® ConnectKey® 1.5 Technology

The right technology for today's  
challenges and tomorrow's tasks.



**It's easy to become overwhelmed by the countless solutions that promise to fix your most pressing issues.**

Choosing the right solutions for your people becomes more complex. You want solutions that simply get it done, behind the scenes – solutions that are there when you need them but stay out of mind because they just work.

Our multifunction printers built on Xerox® ConnectKey® Technology let you focus on your job, providing a critical advantage for small-to-medium businesses and enterprise customers alike. This simple-to-implement technology gives you real, practical solutions that easily streamline how you communicate, process and share important information, simplify complex paper-driven tasks, and drive down costs.



East Rochester School District  
Saves Time and Money with Xerox



Click to jump to the following sections.







## Xerox® ConnectKey® Technology – simplicity redefined.

ConnectKey is a software ecosystem that provides the building blocks to leverage your multifunction printer to simplify the way work gets done.

### Solving today's complexities.

Documents are the currency of business. They are the heart of critical workflows and drive almost every aspect of business. When a group of IT managers, business managers, and mobile workers was asked, 70% said optimizing document flow would help them respond to market needs more quickly and 62% said it would improve overall revenue\*. Why? Because improved employee productivity has strategic revenue-generating consequences. More-productive employees spend more time on innovation, customer service, winning new business, and making the business more competitive.

Imagine an office environment where all print devices have the same core features and functionality, thereby dramatically increasing adoption, and providing a simplified user training experience with less mistakes and faster proficiency. The common architecture behind ConnectKey, features industry-leading security highlighted by our groundbreaking partnerships with McAfee® and Cisco® to provide additional layers of security software and greater visibility to IT.

ConnectKey solutions reduce waste and paper consumption, and give you time back in your day to do your job more effectively. Plus, compatibility with energy management solutions such as Cisco EnergyWise and a mix of innovative features enable reduced power consumption so you can achieve your sustainability promises. We have rounded out this amazing ecosystem by empowering today's mobile workforce to conduct business

in ways that work for them, with scalable, cloud-ready mobile solutions. And we have simplified customers' workflows through tools like ConnectKey for SharePoint®, ConnectKey for DocuShare® or Business Process Outsourcing integration through Xerox.

Whether you manage the devices yourself or choose a Xerox® Managed Print Service, you'll benefit from the tools ConnectKey offers to cut your costs and keep you moving forward.

For more information on Xerox® ConnectKey visit us at [www.xerox.com/connectkey](http://www.xerox.com/connectkey).

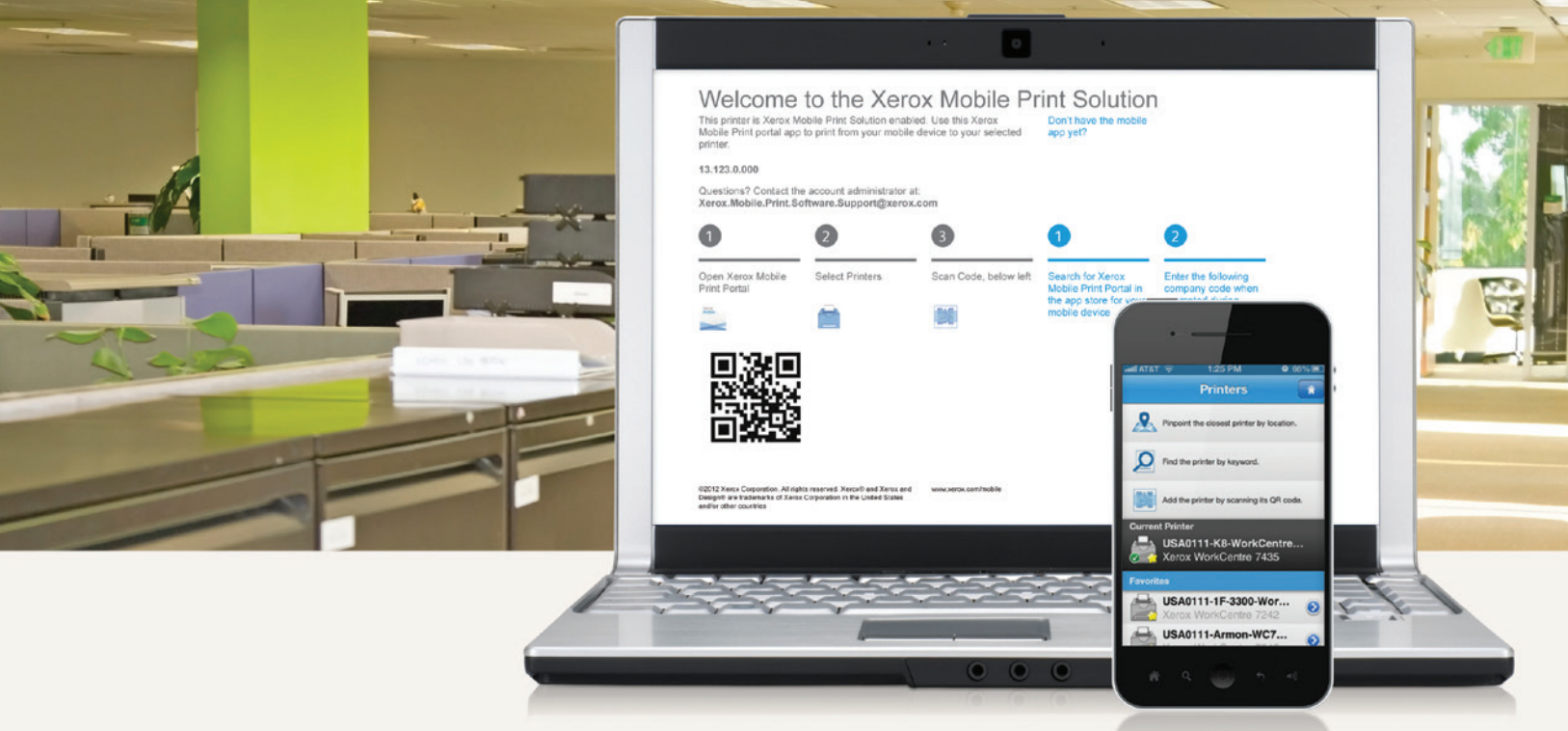
\* "The Future of Documents: How They Drive Business, Today and Tomorrow." IDC global research study, sponsored by Xerox, January 2012.



Simplicity Redefined Video

➤ Click to jump to the following sections:





## Convenience for the way you work today.

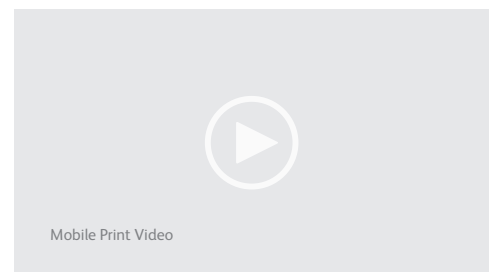
**With working professionals operating beyond the confines of office walls and a 9-to-5 schedule, yesterday's workplace conveniences may not provide much help today.** Which is why MFPs enabled with Xerox® ConnectKey® offer mobile printing and scanning solutions that integrate fully with cloud-based technologies and mobile devices.

### Connect and share everywhere.

These MFPs enable powerful, single-touch scanning workflows in various formats such as text searchable and single/multi-page PDFs. Our scan to cloud solutions allow you to convert documents to Microsoft® Word® and Excel®. You can share your documents via standard network folders, email, cloud-based repositories (Google Docs™, Salesforce.com, Office 365, Dropbox™, etc.), document management utilities, or back-end enterprise resource-planning systems.

### Freedom in the office and room to roam.

With the proliferation of smartphones and tablets as must-have business tools, you need a multifunction device that's ready to connect to your on-the-go workforce. ConnectKey-enabled MFPs can be connected wirelessly, allowing you the freedom to place the device in more-accessible locations without the additional network infrastructure costs. Plus, support for protocols like Apple® AirPrint™ enables users or guests to easily connect and print from their iOS® smartphones or tablets. Xerox® ConnectKey-enabled devices are Mopria™ certified. This certification simplifies the mobile printing experience for tablets and smartphones to Xerox® devices, visit [www.xerox.com/mobile](http://www.xerox.com/mobile) for more information.



Click to jump to the following sections:





# Wait no longer for the way you want to work.

**Your business operates at the pace of possibility.** Staying up to speed means having the right kind of help – a solution that not only empowers you to get today's work done faster, but one that also gives you the tools you need to adopt new and better ways of working with your colleagues and clients.

## No more obstacles.

You need to quickly find and share your work for more effective collaboration, to move information into critical systems for faster decision-making and rapid response time. Xerox® ConnectKey® technology enables features like the enhanced address book with favorites, which lets you seamlessly import your existing contacts and roll them out to multiple MFPs.

## Time-saving administration.

Whether you are a skilled administrator managing hundreds of devices, or one person managing a single device, Xerox gives you tools anyone can use to implement new workflow processes or other tasks. Onboard tools help you address potential issues, enabling multifunction printers built on ConnectKey to stay more productive, longer. And when help is needed, speed is the key. That's why we put Online Support and Embedded Help Videos that anyone can follow right on the front panel for fast assistance, and online help in our print drivers.

Our Remote Control Panel feature further reduces support and response times, enabling real-time training and troubleshooting from anywhere so you can resolve issues immediately and eliminate the need to wait for on-site visits. Customizing solutions are made possible by Xerox Extensible Interface Platform® serverless technology that allows creation of ConnectKey Applications to run on these MFPs, without the need for additional IT infrastructure. This allows you to simplify and personalize the usability of your device with a range of capabilities from support applications to scanning. To learn more, visit [www.office.xerox.com/connectkey/apps](http://www.office.xerox.com/connectkey/apps).

For more information on other ways you can significantly improve productivity by partnering with Xerox, visit [www.xerox.com/mps](http://www.xerox.com/mps).

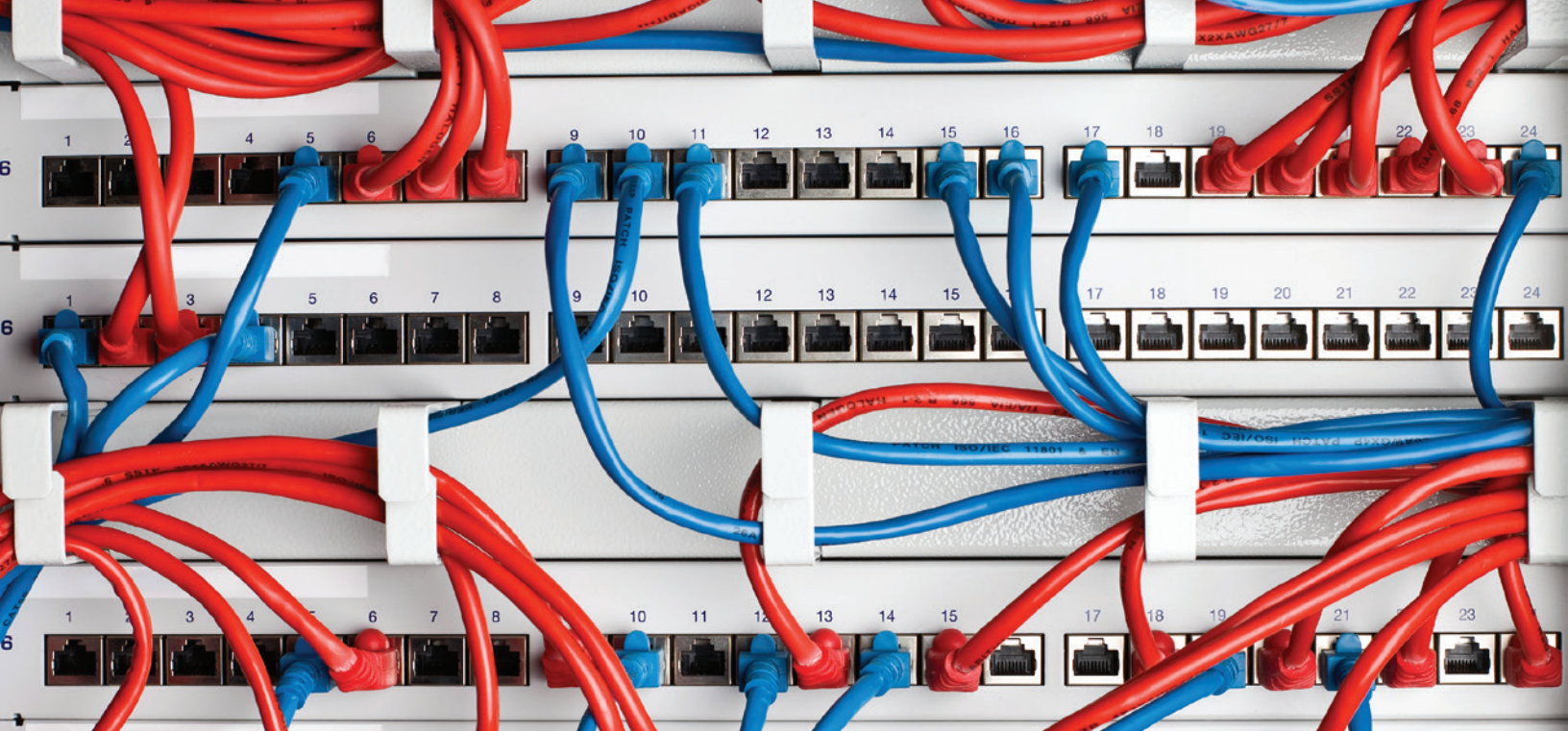


Always There Video

➤ Click to jump to the following sections:







## Connect safely.

**Your data. Your business.** Making your device more accessible to all comes with risks. And while everyone realizes the need to safeguard their PCs with virus and malware protection, it's also critical to understand that multifunction printers are potential points of entry for malicious activities.



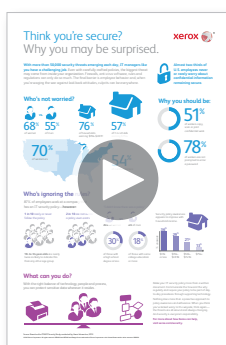
### Powerful Partnerships

Xerox® ConnectKey®-enabled MFPs include McAfee® technology integration, resulting in the industry's first lineup of multifunction printers that protect themselves from potential outside threats. McAfee's whitelisting technology ensures only safe, pre-approved files or functions are executed on your devices, minimizing the need to manually update software levels against new security threats. Also, seamless integration with the Xerox® Managed Print Services toolset and McAfee ePolicy (ePO) allows for easy tracking and monitoring.

Plus, automatic Cisco® TrustSec Identity Services Engine (ISE) integration provides comprehensive visibility of all of these MFPs' endpoints to enforce IT-centric security policies and compliance.

### More secure anywhere.

Xerox® ConnectKey® provides the most comprehensive range of advanced features and technologies to help ensure your company's confidential information stays secure. Ready out of the box, our standard security features include 256-bit hard disk encryption, McAfee® protection, image overwrite, secure printing with time deletion and emailing to external mail servers, plus a host of other safeguards that help protect your business-critical information from all vulnerabilities.



### Compliance with standards.

At Xerox, we believe comprehensive, multi-layer security that is easy to deploy and manage is a critical factor in the success of any business or organization of any size. Xerox® technology is tested and validated to ensure protection against unauthorized access, and to keep your business compliant with standards across multiple key industries.

For more information about how Xerox helps make you more secure, visit [www.xerox.com/security](http://www.xerox.com/security).

Click to jump to the following sections:



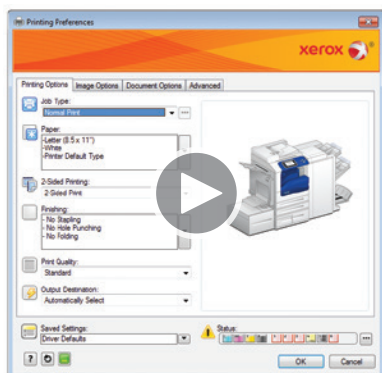


## Real-world challenges, real cost savings with simple solutions.

**To succeed, your business needs to reduce costs where it can.** With Xerox, you can gain an important competitive advantage with innovative tools that help you save time, control costs, simplify the way you manage printing in your office, and get a significant return on your investment.

### Convenience Authentication

Xerox® ConnectKey®-enabled multifunction printers can be upgraded with optional solutions to deliver even greater cost control capabilities. They support many card reader technologies that enable users to log into the device using a proximity card, student ID, or security card, providing a secure method of authentication, tracking usage and billing.



### Saving you time so you can save money.

Whether it's out-of-the-box default settings like two-sided printing, our innovative Earth Smart feature, or the built-in technology that avoids a second pass of the print engine if only one page was sent, our new technology helps you control who prints what, when and how.

ConnectKey Technology evolves with your needs, starting with very simple controls from restricting usage and regulating color printing. The available User Permission control integrates with your internal authentication system – allowing you to prevent pre-determined or non-authenticated users from seeing specific features on the user interface, and to restrict color printing or single-sided documents universally or by application, time of day, or day of the week. And our Microsoft® Windows® print drivers give you the ability to save different settings per application, minimizing the need for your users to make changes and reducing the risk of potential errors.

### Reduced energy consumption for increased savings.

As a charter partner of the international ENERGY STAR® program, each new generation of Xerox® products offers more functionality and uses less energy – saving our customers money and reducing their carbon footprint.

Plus, MFPs built on ConnectKey Technology are compatible with energy management solutions such as Cisco® EnergyWise.

For more information on our sustainability efforts, visit us at [www.xerox.com/environment](http://www.xerox.com/environment).

Click to jump to the following sections:







## Xerox® ColorQube® 8700 Color Multifunction Printer

A4 44 ppm color 44 ppm b/w

- ▶ Webpage
- ▶ Specifications
- ▶ Virtual Demo

- Print speeds as fast as 44 ppm for color and black-and-white
- Innovative, award-winning Solid Ink technology



## Xerox® ColorQube® 8900 Color Multifunction Printer

A4 44 ppm color 44 ppm b/w

- ▶ Webpage
- ▶ Specifications
- ▶ Virtual Demo

- Print speeds as fast as 44 ppm for color and black-and-white
- Low color run costs and low total cost of ownership
- Innovative, award-winning Solid Ink technology



## Xerox® ColorQube® 9300 Series Color Multifunction Printer

A3 55 ppm color 60 ppm b/w

- ▶ Webpage
- ▶ Specifications
- ▶ Virtual Demo

- Print speeds as fast as 45 to 55 ppm for color, as fast as 55 to 60 ppm for black-and-white
- High volume color with flexible price plan
- Innovative, award-winning Solid Ink technology



## Xerox® WorkCentre® 5800 Series Multifunction Printer

A3 90 ppm b/w

- ▶ Webpage
- ▶ Specifications
- ▶ Virtual Demo

- Print speeds as fast as 45 to 90 ppm
- Color scanning and a wide array of finishing options, including hole punch, staple, insertions, folder and booklet maker



## Xerox® WorkCentre® 7200 Series Color Multifunction Printer

A3 25 ppm color 25 ppm b/w

- ▶ Webpage
- ▶ Specifications
- ▶ Virtual Demo

- Print speeds as fast as 20 to 25 ppm for color and black-and-white
- Ideal for small workgroups
- Small footprint with low noise levels



## Xerox® WorkCentre® 7800 Series Color Multifunction Printer

A3 50 ppm color 55 ppm b/w

- ▶ Webpage
- ▶ Specifications
- ▶ Virtual Demo

- Print speeds as fast as 30 to 50 ppm for color, as fast as 30 to 55 ppm for black-and-white
- Need for easy-to-use or professional color workflows with a wide variety of finishing options

▶ Click to jump to the following sections:



## Key Features and Solutions Capabilities

Convenience	Standard	Apple AirPrint, Single Touch Scan, Xerox® Mobile Express Driver®, Xerox® Printback, Mopria™ Certified
	Optional	ConnectKey for SharePoint®, ConnectKey for DocuShare®, ConnectKey Share to Cloud, Wi-Fi Kit, Xerox® Mobile Print, Xerox® Mobile Print Cloud
Productivity	Standard	Address Book Integration, Remote Control Panel, Application Defaults, Searchable PDF, Print Around, TWAIN Support, Scan to Home, Scan to Email, Scan to Mailbox, Cloning, Online Support from UI and Print Driver, Color By Words, Xerox® Global Print Driver®, Xerox® CentreWare® Web
	Optional	ConnectKey Apps, Xerox® Scan to PC Desktop® SE and Pro, Foreign Device Interface Kit, Unicode Fonts Kit
Security	Standard	McAfee® Embedded, McAfee ePO Compatible, Hard Disk Image Overwrite, 256-bit Encryption (FIPS 140-2 compliant), Secure Print, Secure Fax, Secure Email, Cisco® TrustSec Identity Services Engine (ISE) integration, Network Authentication, SSL, SNMPv3, Common Criteria Certification
	Optional	McAfee Integrity Control, Smart Card Enablement Kit (CAC / PIV/.NET), Xerox Secure Access Unified ID System®
Cost Control	Standard	Print Policies, User Permissions, Xerox® Standard Accounting, Cisco® EnergyWise enabled by Xerox® Power MIB, Earth Smart Print Driver
	Optional	Equitrac® Professional, Equitrac Office®, Equitrac Express®, YSoft® SafeQ®, Print Audit and many other solutions by Business Innovation Partners



Download a Printable PDF

Build and configure your own Xerox® ConnectKey®-enabled MFP at [www.buildyourownxerox.com/connectkey](http://www.buildyourownxerox.com/connectkey).

For more information visit us at [www.xerox.com/connectkey](http://www.xerox.com/connectkey).